

Norwegian hospital planning tools

Knut Bergsland
SINTEF Health Research
Espoo, Dec.1.2006

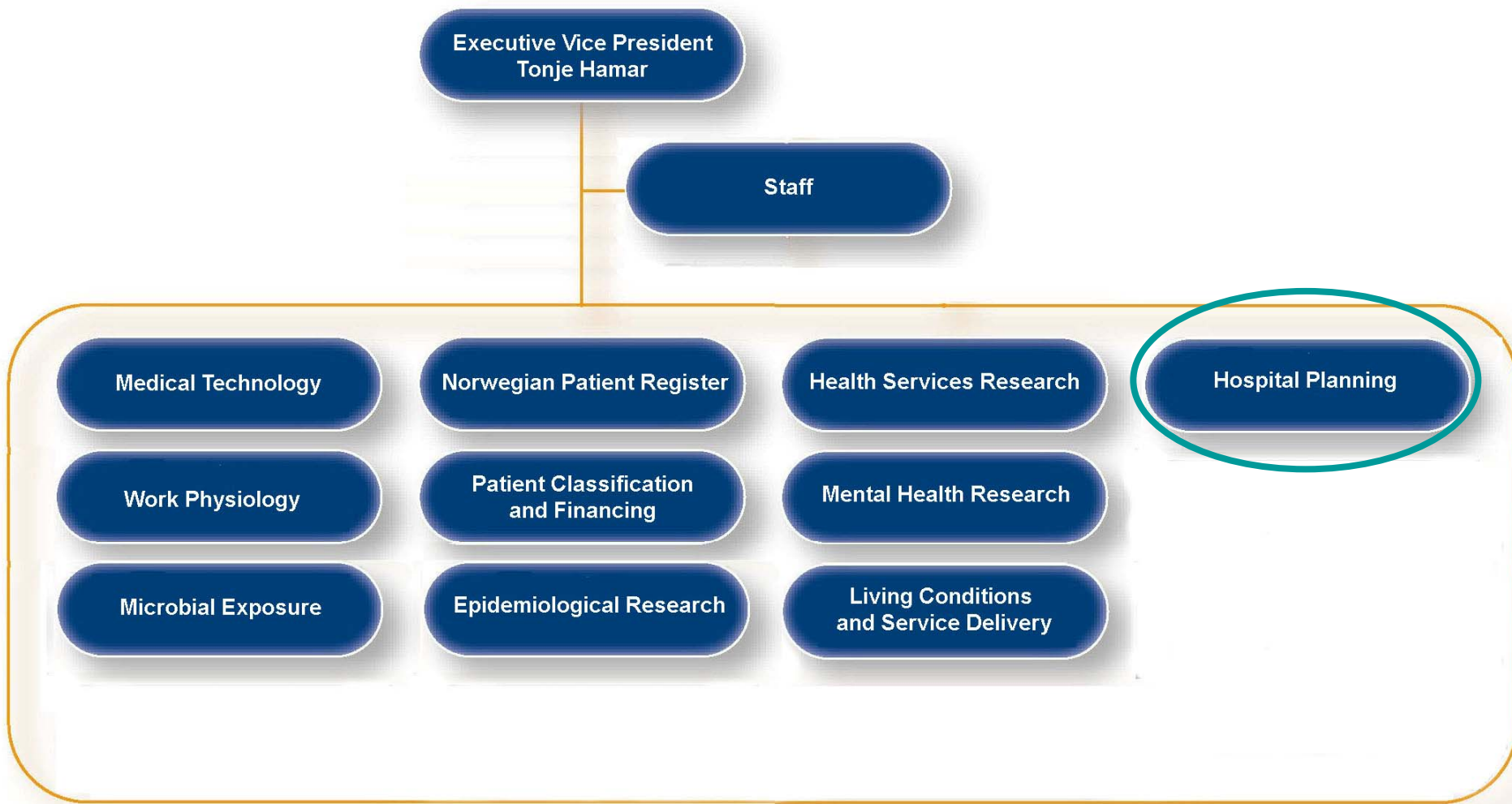


SINTEF Health Research

Research for improved health and a better quality of life



SINTEF Health Research Organisational structure



SINTEF – strong brand name

SINTEF Health Research - reputation for:

- Doing critical, applied R&D in health services research,
- Doing consultancy with upfront models
- Premise provider, most cited organisation in National health budget documents

SINTEF Health Research - Hospital Planning :

- Consultancy – 75 % -reduction?
- Research and development 15 % - growing
- Secretariat governmental Hospital planning network 10 %

- Major customers:
 - Directorate of health & Social Affairs
 - Regional Hospital Trusts
 - Hospital trusts

What do we do ?

- Strategic facilities capacity planning/ scenarios and projections – (Regional Hospital Trusts)
- Hospital and whole systems processes (Clinical pathways)
- Models for predicting future hospital use
- Planning process systems development
- Functional programming – (Hospital trusts)
- Evaluation of hospital design

Developing planning tools and models– important in being at the frontline

Opportunities for jumping together ?



Frame of reference for tools development:

.

Competence Network for Hospital Planning (KNS)

Goal:

- Contribute to competent and efficient planning, development and construction of somatic and psychiatric hospitals and other health care buildings
through
information and exchange of experience.

Ownership:

- Directorate of Health and Social affairs + 5 Regional Health Boards
Secretariat: SINTEF Health Research

Competence Network - activities

- **develop and operate the web portal www.sykehusplan.no**
- **gather and communicate competence** between hospital projects and planning communities
- develop **co-operation with** specialist environments and **research communities**, nationally and **internationally**
- develop and spread guidance material
- assist in evaluation and approval of hospital projects
- initiate and implement **conferences, workshops and seminars** on hospital planning
- initiate and implement **research and development projects** within hospital planning

www.sykehusplan.no – organiser and vehicle

- Information portal for Hospital planning in a very broad sense. Covers most countries
 - Projects, guidelines, planning informations, tools, links, etc
- Norwegian and English versions
- Unique visitors from 70 countries, 1200 – 2000 per month
- New items 3-4 times per week
- Newsletter
- Running costs: 0,25 manyear

- Database solution
- Relating similar objects

Information should be public and free

- Free flow of information raises the quality of the whole hospital planning community.
- Keeping your professional secrets is only a short term gain

We needed:

- a vehicle for free information on the most important aspects of hospital planning
- someone to gather and present the information.
- A stamp of approval – but not in the name of the Government.

SYKEHUSPLAN.no

- nettstedet for deg som er interessert i sykehusplanlegging

ritekst søk>

- Søk
- Hjelp til søk
- Om sykehusplan.no
- Kompetansenettverket
- Kontakt oss

- on Sykehusplan
- the Competence network
- ews
- inks
- orwegian hospitals
- orwegian projects
- orwegian health system
- orskning og utvikling
- ediger
- lyhetsbrev admin
- skjult visning
- rosjektkalender
- ogg ut

konsistent terminologi. [27.11.2006]
[Les mer...](#)

Nytt Universitetssykehus i Coventry
 I denne artikkelen om det nylig innflyttede PFI-sykehuset i Coventry spør arkitekten byggherre og prosjekteringsleder om produktet svarer til forventningene.
[Les mer...](#) [23.11.2006]



Laboratorium for helsebyggdesign
 Presentasjonen drøfter behovet for simulering av fysiske omgivelser i forbindelse med utbygging av nye sykehus.
[Les mer...](#) [22.11.2006]



Århus bygger kjempesykehus
 Århus Universitetssykehus utlyser EU-konkurranse om nytt sykehus. Det skal integreres med Skejby sykehus og får et nybygg på 250 000 m2
[Les mer...](#) [21.11.2006]



Nybygg ved Norrlands Universitetssjukhus
 Planleggingsnyhet fra Sverige! Her finner du fakta om planlegging og utbygging av Norrlands Universitetssjukhus i Umeå.



Planverktøy
Klassifikasjonssystem for funksjoner og rom i sykehus

Veileder for tidligfaseplanlegging - sykehusprosjekter

Grønne sykehus - amerikansk sjekkliste

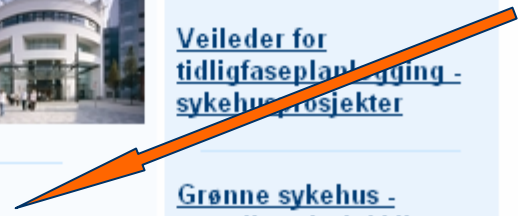
Ideas

Helse Øst: Standardiseringsarbeid FDVU - helse

ASPECT - evalueringsverktøy for designkvalitet

AEDET Evolution

Laboratory for simulating health care environments



A web portal for Nordic hospital planning and design?

A vehicle for showing our strengths to the world?

- Sweden: Forum för Vårdbyggnadsforskning wants to cooperate with Sykehusplan to establish a stronger Swedish website.
- Denmark: We receive
- Finland: We invite you to submit projects (English/Swedish material)

Competence network: Tools

Tools so far:

- Space classification system, existing hospitals for comparison of similar functional units/ hospitals (functions, space use from room level to whole hospital level)
- Guidelines for the planning process – from the idea phase to final planning phase - adopted by all Regional health boards
- Guidelines for functional hospital planning (DoH)
- Guidelines for equipment planning (DoH)
- Follow-up system for planning of projects

Tools: Use of hospital space

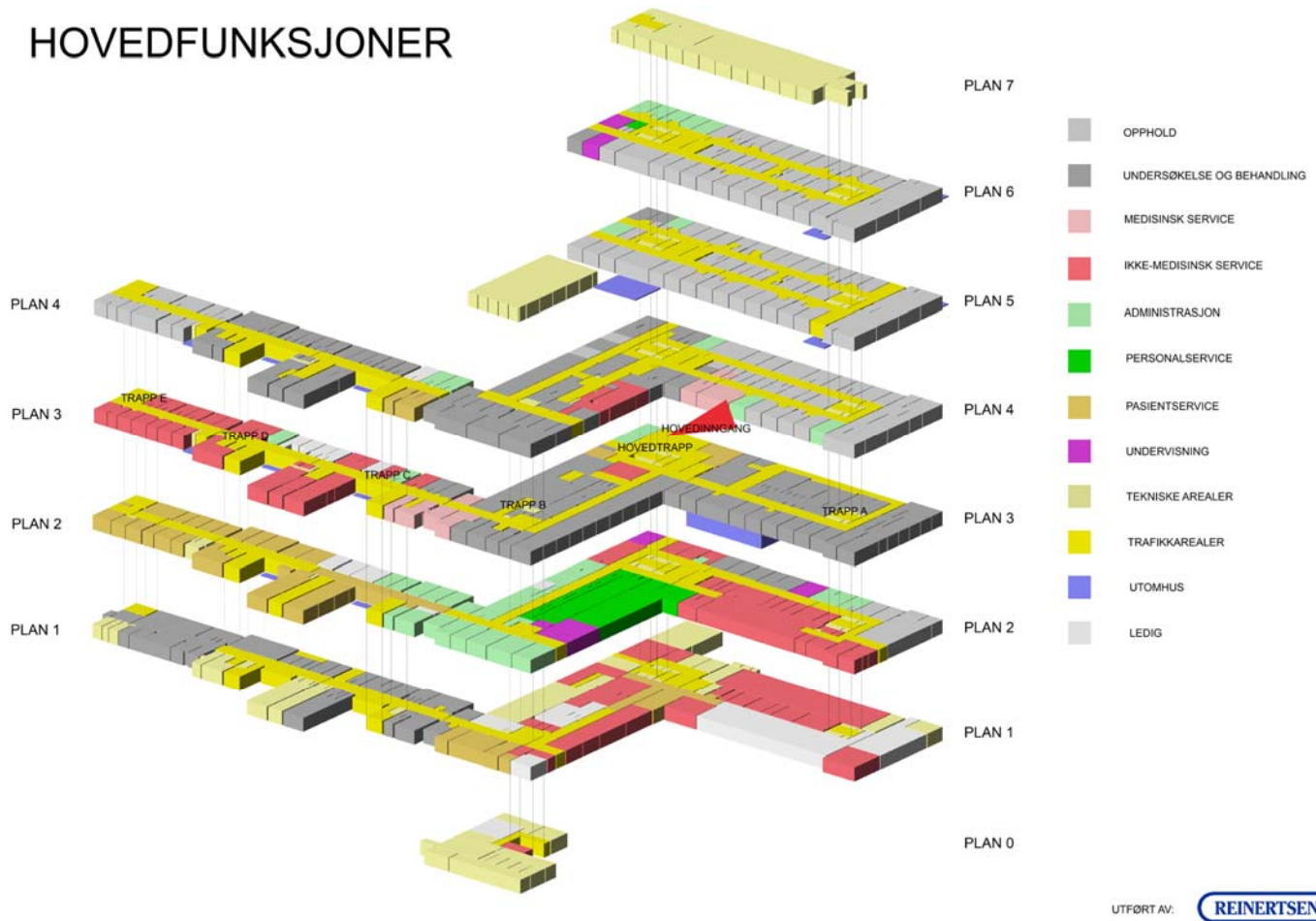
Tools linking space use and activity:

- **Space classification system**, existing hospitals (functions, space use from room level to whole hospital level). Somatic and psychiatric

coupled with:

- **Activity data** from patient records and official sources on patient/ personnel levels (SAMDATA- yearly statistics)
- Utilisation of space – over-/ under use of room and space capacity

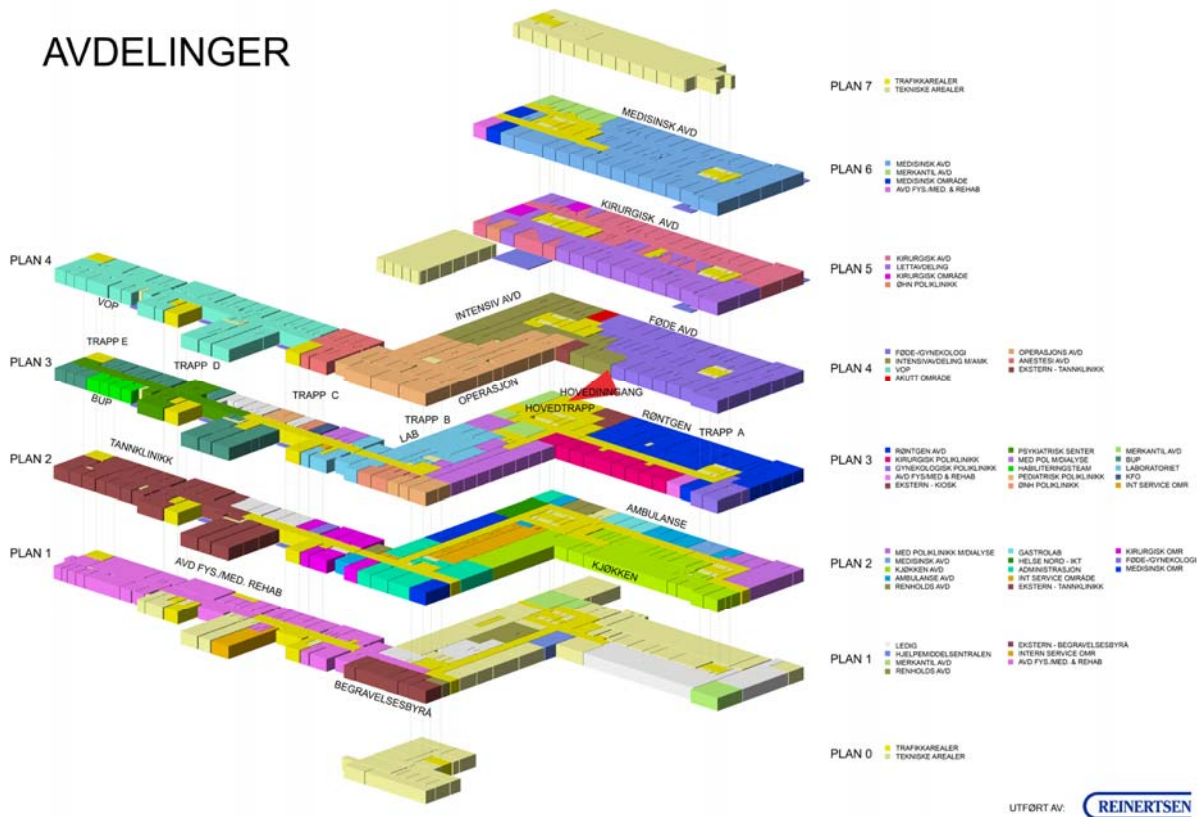
HOVEDFUNKSJONER



Easy grasping the whole picture?

Main hospital functions – 12 categories, visualisation

AVDELINGER

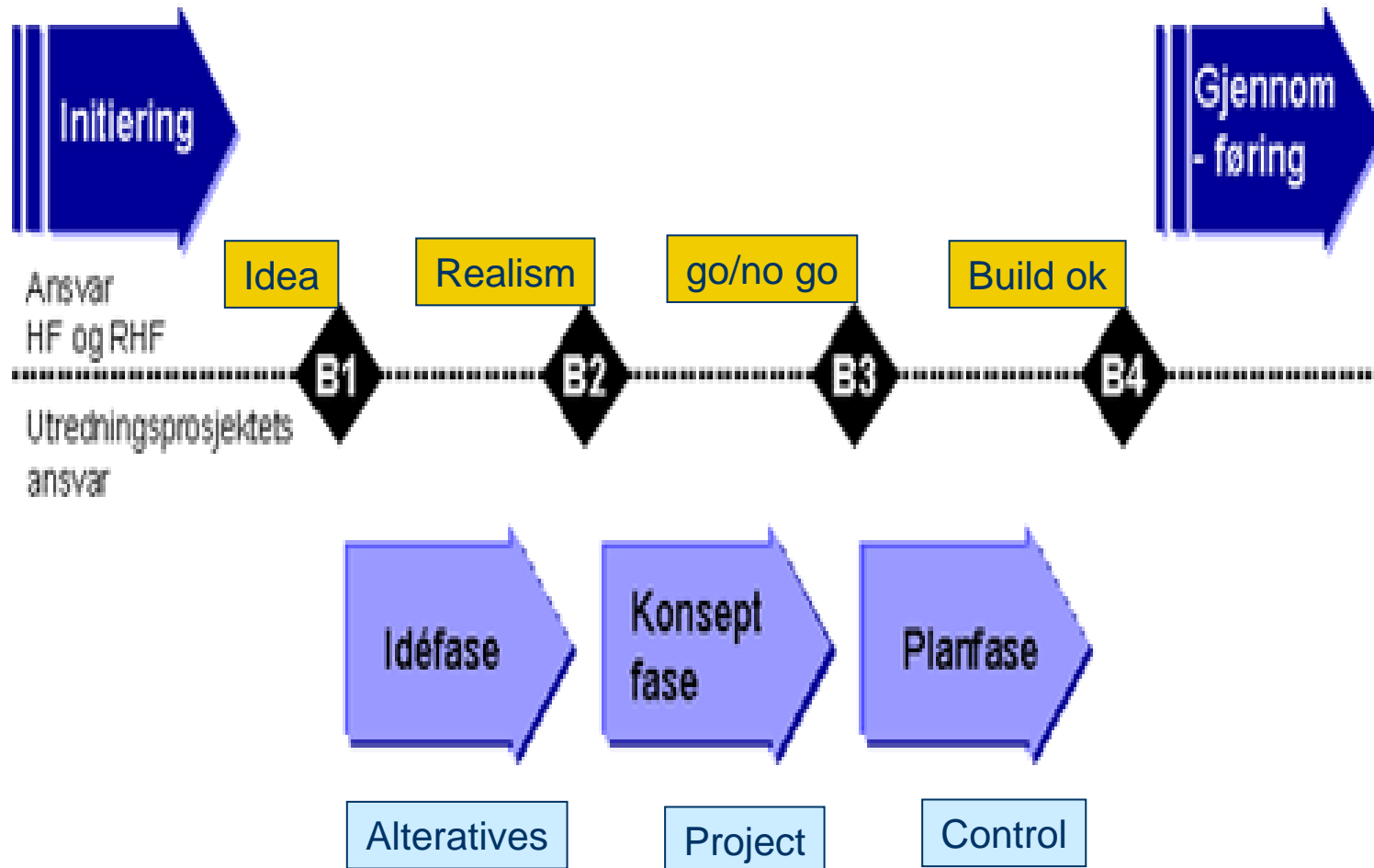


Easy to grasp the whole picture ?

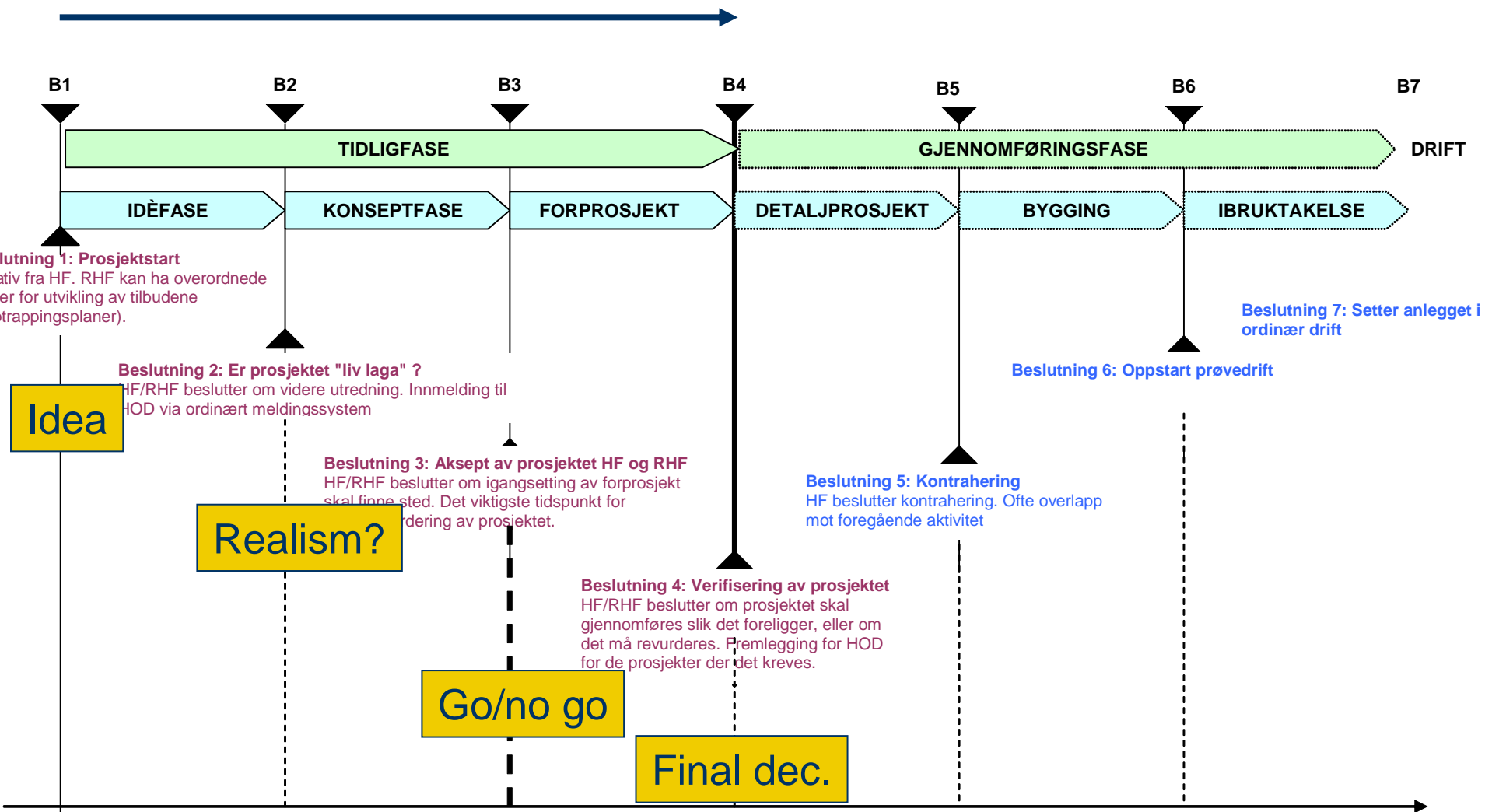
Would an international colour coding system help?

Departemental structure

Guidance for Decision making process – planning phase



Guidance for the decision making process of hospital projects – planning phase



Guidance for planning of Hospital projects

Guidance for Master plan development (2000)

- Contents and checklists
- Main principle: Transparency and reproducibility

Guidance for Masterplan equipment (2001)

- Planning process, goals, cost calculus principles
- Strategies for choice – use of existing equipment

Revisions necessary – adopting to G. for planning process

Follow-up evaluation model for projects (2005)

Model for continuous follow-up of hospital project planning to influence quality of the content and implementation.

- External QA- activity by use of third-party evaluator

Two forms/ roles:

- External evaluation: Is the process according to rules?

more objective – less influence

- Participating evaluation: Do you do things according to good/new ideas?

Less objective – more influence

SINTEF Tools development:

Project:

”Facilities as a strategic tool for effective health care services”

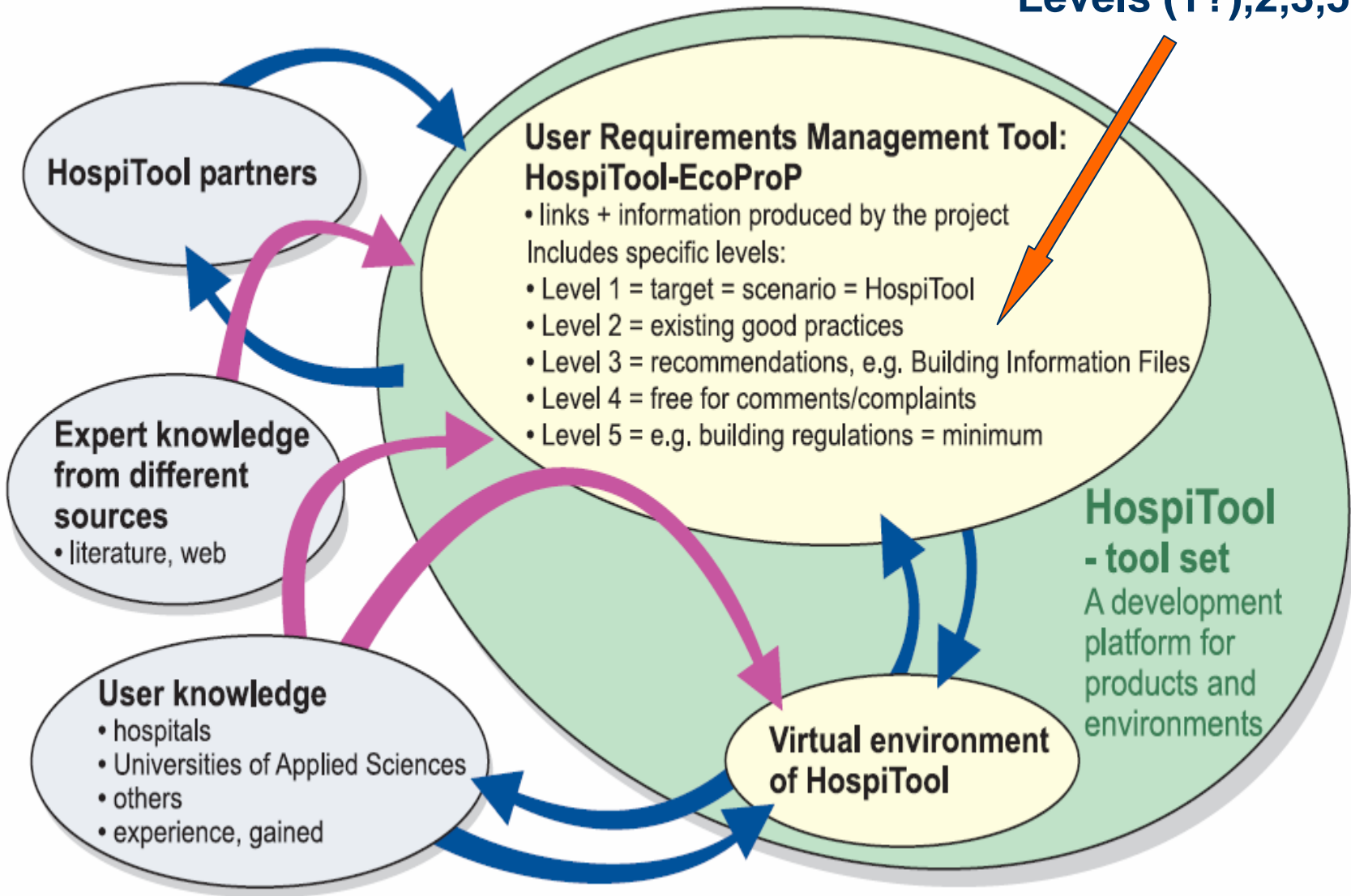
(Multiconsult/ SINTEF)

- Methods/ models for capacity planning that build on both health care needs and facilities/ asset needs
- Methods/ models for strategic planning of buildings – including Life Cycle Economy. (Multi Map)

Possible project:

- Simulating hospital capacity planning

Possible interfaces, Levels (1?),2,3,5



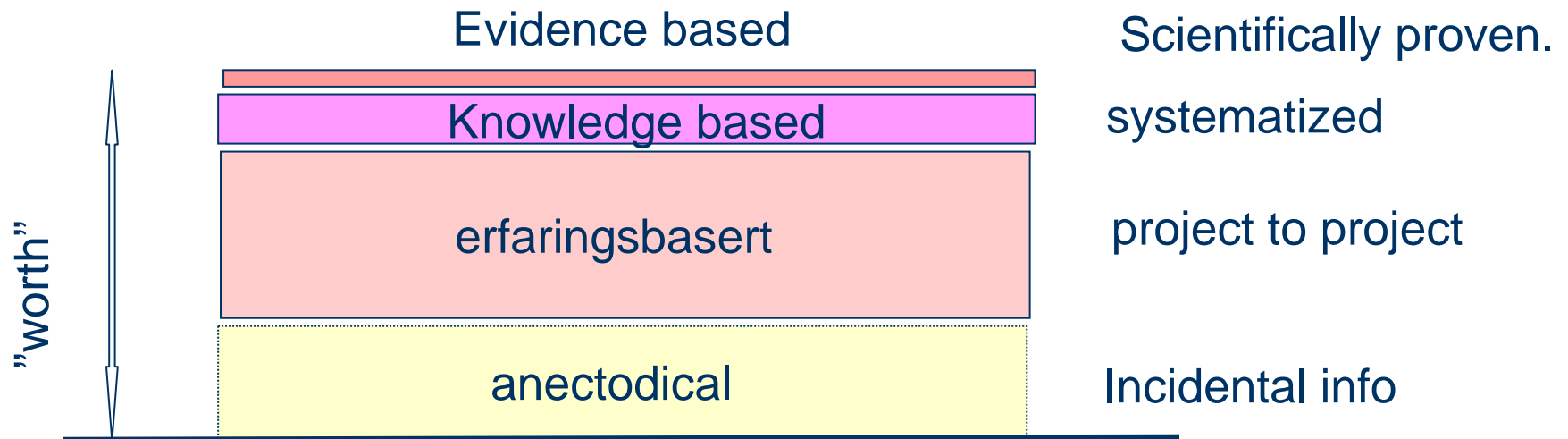
User participation

- User participation should be user involvement.
- Participation: Too often formal, not always the right people (RH)
- Involvement means:
 - empathy from the user
 - Assurance that she will have practical influence on the end product
- Attempts at getting users understand space needs, functionality, when decisions shall be made – at the right level.

- Does the real life mock-up tell the full story at the right time?
- Can the virtual representation stand alone?

Evidence based design- for hospital designers

Basis:





Norway – and
Finland

Differences in
perspective may
give fruitful
collaboration

knut.bergsland@sintef.no